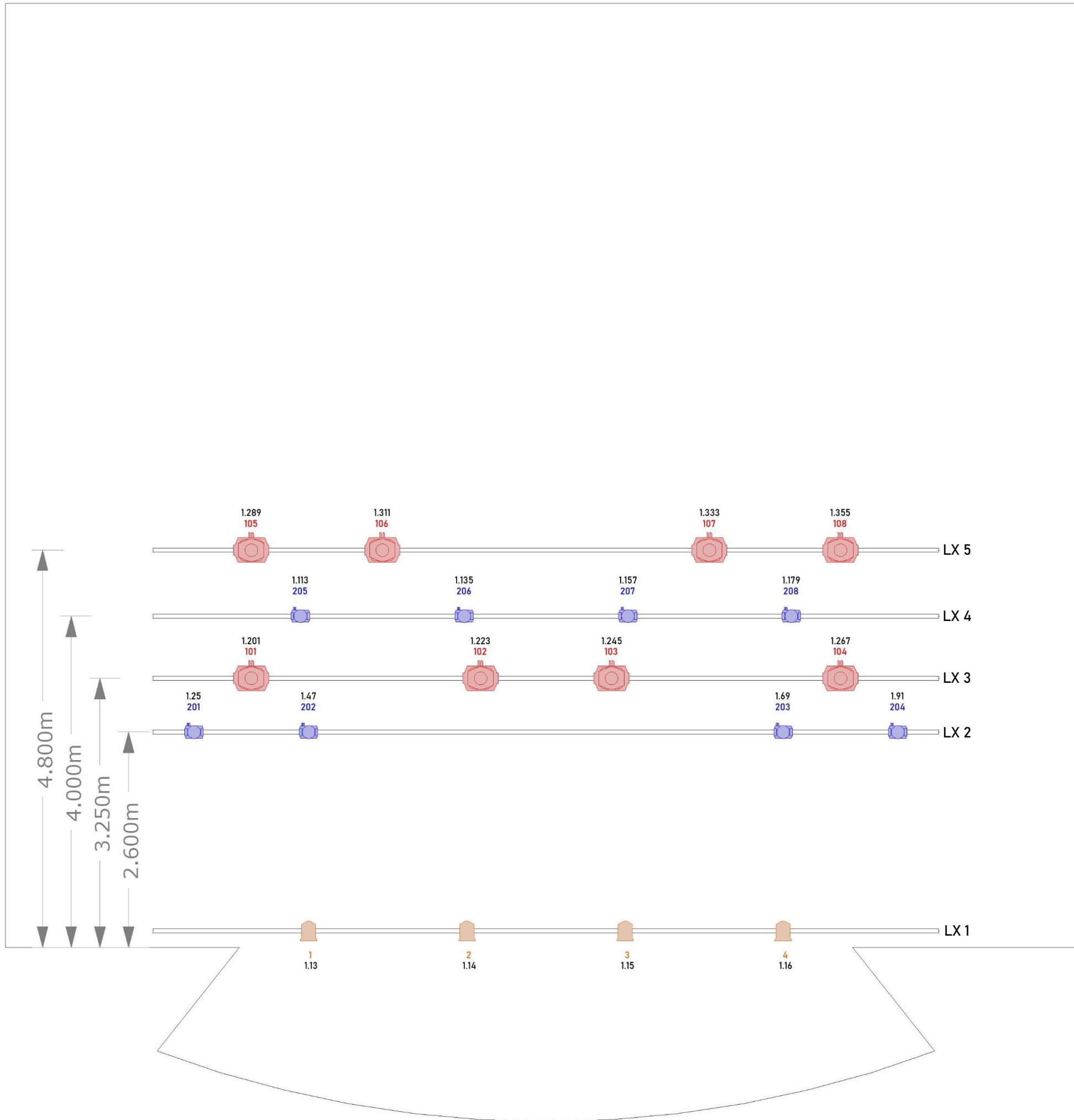


Svendborg Teater Lighting Setup

Document: Top View With Patch
 Version: 1
 Print Date: 24 Nov 2020



Moving Light Fixturs	Mode	Ch.	Patch	Unit Nr.	LX
ROBE LEDBeam 150	1	22	1.025	201	LX 2
ROBE LEDBeam 150	1	22	1.047	202	LX 2
ROBE LEDBeam 150	1	22	1.069	203	LX 2
ROBE LEDBeam 150	1	22	1.091	204	LX 2
ROBE LEDBeam 150	1	22	1.113	205	LX 4
ROBE LEDBeam 150	1	22	1.135	206	LX 4
ROBE LEDBeam 150	1	22	1.157	207	LX 4
ROBE LEDBeam 150	1	22	1.179	208	LX 4
ACME XA-400 SPOT PRO	2	22	1.201	101	LX 3
ACME XA-400 SPOT PRO	2	22	1.223	102	LX 3
ACME XA-400 SPOT PRO	2	22	1.245	103	LX 3
ACME XA-400 SPOT PRO	2	22	1.267	104	LX 3
ACME XA-400 SPOT PRO	2	22	1.289	105	LX 5
ACME XA-400 SPOT PRO	2	22	1.311	106	LX 5
ACME XA-400 SPOT PRO	2	22	1.333	107	LX 5
ACME XA-400 SPOT PRO	2	22	1.355	108	LX 5

Conventional Lights	Type	Patch	Position
"Blinder" Fresnel	DIM	1.013	Front Stage
"Blinder" Fresnel	DIM	1.014	Front Stage
"Blinder" Fresnel	DIM	1.015	Front Stage
"Blinder" Fresnel	DIM	1.016	Front Stage
ETC Source 4	DIM	1.001	Hall, SL (DS)
ETC Source 4	DIM	1.002	Hall, SL (DS)
ETC Source 4	DIM	1.003	Hall, SL (DS)
ETC Source 4	DIM	1.004	Hall, SL (DS)
ETC Source 4	DIM	1.007	Hall, SR (KS)
ETC Source 4	DIM	1.008	Hall, SR (KS)
ETC Source 4	DIM	1.009	Hall, SR (KS)
ETC Source 4	DIM	1.010	Hall, SR (KS)

- Connection to House Rig via 1x 5-Pin DMX in FOH or Stage Left
- House lights is controlled by wired remote in FOH or Stage Left

Venue Technical Director:

Anders Gedde Sejdelin
 +45 20 88 70 98
 anders@borgerforeningen.info

Document by:



Venue Main Cell:
 Venue Main Email:

+45 62 22 23 21
 mail@borgerforeningen.info